

## Shoreline Recreation

**PICNICKING** Picnic facilities are provided at Doolittle Staging Area and along Airport Channel, in the meadows off Swan Way, at Garretson Point, along the Marsh Trail, and at the Tidewater Staging Area. Areas may be reserved for large picnics (50 or more persons). There is a reservation fee.

**BIRDWATCHING** Enjoy birdwatching at Doolittle Pond or from the trail along the San Leandro Creek Channel to Arrowhead Marsh.

**HIKING AND BICYCLING** The 1,220-acre Martin Luther King Jr. Regional Shoreline provides paved trails for hiking, bicycling, and jogging. Glimpses of the changing sunset are best caught at Arrowhead Marsh and Garretson Point.

**FISHING** State Fish and Game rules apply at San Leandro Bay. A California State Fishing License is required for those 16 years and older when fishing from shore in open bay waters. Note the fishing docks locations shown on the map, and observe posted hours and rules. Trespassers on or through private property adjacent to the park will be cited.

**SUNBATHING** There is a sandy beach at the Doolittle and Garretson Point staging areas for sunbathers.

**BOAT LAUNCHING** A two-lane boat launch is located at the south parking lot along Doolittle Drive. There is no fee. Buoys mark the channel to deeper water. Be alert to marked and unmarked hazards throughout the Bay. Motorized boats and hovercraft are not allowed in marshland areas. Motorized vessels are restricted during certain times of the year due to bird migration and nesting in the marshes. The Tidewater Boating Center features a boathouse, canoe/kayak launching facility, and trailhead.

**TIDEWATER BOATING CENTER** is a 12,300-square-foot boathouse complex. Amenities at the site include Bay Trail access, picnicking sites, fishing, parking, and a restroom. The Oakland Strokes partner with the Park District to operate the center and mentor youngsters living near Tidewater in competitive rowing. EBRPD and other organizations will provide on-the-water experiences with boating and water safety, sea kayaking, canoeing, and other water-related recreational programs for area youth and the general public.

**POLICE, FIRE, MEDICAL EMERGENCY** ..... 9-1-1  
**EBRPD HEADQUARTERS** ..... 1-888-EBPARKS  
**PICNIC RESERVATIONS**... 1-888-327-2757, option 2, 1  
**PARK OFFICE** ..... 1-888-EBPARKS, option 3, ext. 4541  
**WEB SITE**..... [www.ebparks.org](http://www.ebparks.org)

## Parkland Rules

Welcome to your Regional Parklands. Help protect park resources and ensure an enjoyable visit for everyone by complying with these rules and any posted regulations. The Park District's Ordinance 38, which is summarized below, lists specific rules for use and protection of regional parklands. Violators will be subject to citation or arrest. For further information, ask a Park Ranger, Public Safety Officer, or telephone (510) 881-1833.

**PARK GATES ARE OPEN** to the public during hours posted at the park entrance. Unless otherwise posted, **CURFEW** is between the hours of 10 p.m. and 5 a.m., except for persons possessing a permit to remain on parklands. **MOTOR VEHICLES** are restricted to designated parking areas and paved public roads.

**BICYCLES** may be ridden on designated bicycle trails, and on fire or service roads, unless otherwise posted. Bicycles are not permitted, either ridden, walked, or carried, in areas posted "No Bicycles," or on narrow hiking or narrow equestrian trails. State law requires that all bicyclists under age 18 wear an approved helmet while riding on trails and roadways. Riders should call out or sound a warning when overtaking other trail users.

**DOGS** must be leashed and under control at any posted area, parking lot, picnic site, lawn, or developed area, and in Resource Protection Areas. No dogs or other animals are permitted in any creek, wetland, or marsh. Dogs may be off-leash in open space and undeveloped areas of parklands, provided they are under control at all times. Owners must carry a leash at all times (six-foot maximum). Dangerous animals are not allowed in the parks. Please dispose of your dog's waste by placing it in a garbage can. Persons who walk more than three dogs at a time on Regional Parks trails must obtain a permit; commercial dog walkers are required to obtain a permit regardless of how many dogs they walk at one time (limit of six). Please call (510) 690-6508 for information.

**SWIMMING, WADING** and other water contact activities are permitted only in designated areas. **DIVING** is permitted only from designated diving boards and swim platforms. **SCUBA diving** is prohibited in any District lake or inland waters.

**PLANTS, ANIMALS, GEOLOGIC, ARCHAEOLOGIC OR HISTORIC OBJECTS** are protected by law. Please do not disturb or remove any of these features.

**HELP PROTECT OUR PARK WILDLIFE** by not releasing or feeding ducks, cats, or other animals. Do not feed wild park animals; enjoy them from a distance.

**FIRES** are permitted in barbecue pits or personal cooking equipment in designated picnic areas or irrigated turf areas only, placed at least 30 feet from flammable materials. Please do not place hot coals on the ground or in a garbage can. Dispose of hot coals or other burned fuel in barbecue pits or in provided hot coal disposal containers.

**FIREWORKS** are not permitted in any Regional Park.

**CAMPING** is not permitted within District parklands without a permit.

A state license is required to **FISH** at all regional parks. A District fishing permit is also required when posted.

**ALCOHOLIC BEVERAGES** are not permitted at pools, swim beaches, or within 50 feet of paved roads, parking lots, or posted areas. Otherwise, beer and wine are permitted at picnic areas and elsewhere on parklands.

**GAMES and ACTIVITIES**, including model rockets, model airplanes, hang gliding, golf, and other activities with potential risk to property or park visitors are permitted only in designated areas.

**ASSEMBLIES, PERFORMANCES, SPECIAL EVENTS**, or similar gatherings require a permit.

Please be considerate of other park visitors if you use a **RADIO**. A permit is required for **AMPLIFICATION** of voice, music, or other sounds.

**FIREARMS or BOWS AND ARROWS** are not permitted on Regional Parklands except at established ranges. Crossbows, spears, slingshots, air pistols or rifles, and other dangerous weapons are prohibited anywhere on regional parklands.

**PARK VISITORS** are responsible for knowing and following park rules.



### To Reach MLK Jr. Regional Shoreline:

From I-880 in Oakland, exit at Hegenberger Road and proceed west. Turn right onto Doolittle Drive (Hwy. 61) and right again onto Swan Way. Then turn left into the park for access to trails, a large grassy play area, reservable picnic areas, and a boardwalk out to the Arrowhead Marsh. Continuing on Doolittle Drive will bring you to fishing piers, a boat ramp, reservable picnic areas, and the reservable Shoreline Center. Public Transit: AC Transit #98 operates daily from Coliseum BART to Hassler Way and Edgewater Drive (about one-eighth mile from the park), and Zhone Way and Oakport streets. AC Transit #73 operates daily along Hegenberger Road from Eastmont Transit Center and Coliseum BART. Routes subject to change. Call to confirm schedule: 5-1-1 or 817-1717; TDD/TTY: 800-448-9790; ParaTransit: 510-287-5000.

If you would like this information in an alternative format, please contact the EBRPD Public Affairs Department at (510) 544-2200, fax (510) 635-3478, TDD (510) 633-0460, or [info@ebparks.org](mailto:info@ebparks.org).

**PLEASE LET US KNOW** how this map may be improved to help you use this park. Write, email, or call with your suggestions: 2950 Peralta Oaks Court, Oakland, CA 94605; [info@ebparks.org](mailto:info@ebparks.org); (510) 544-2210.



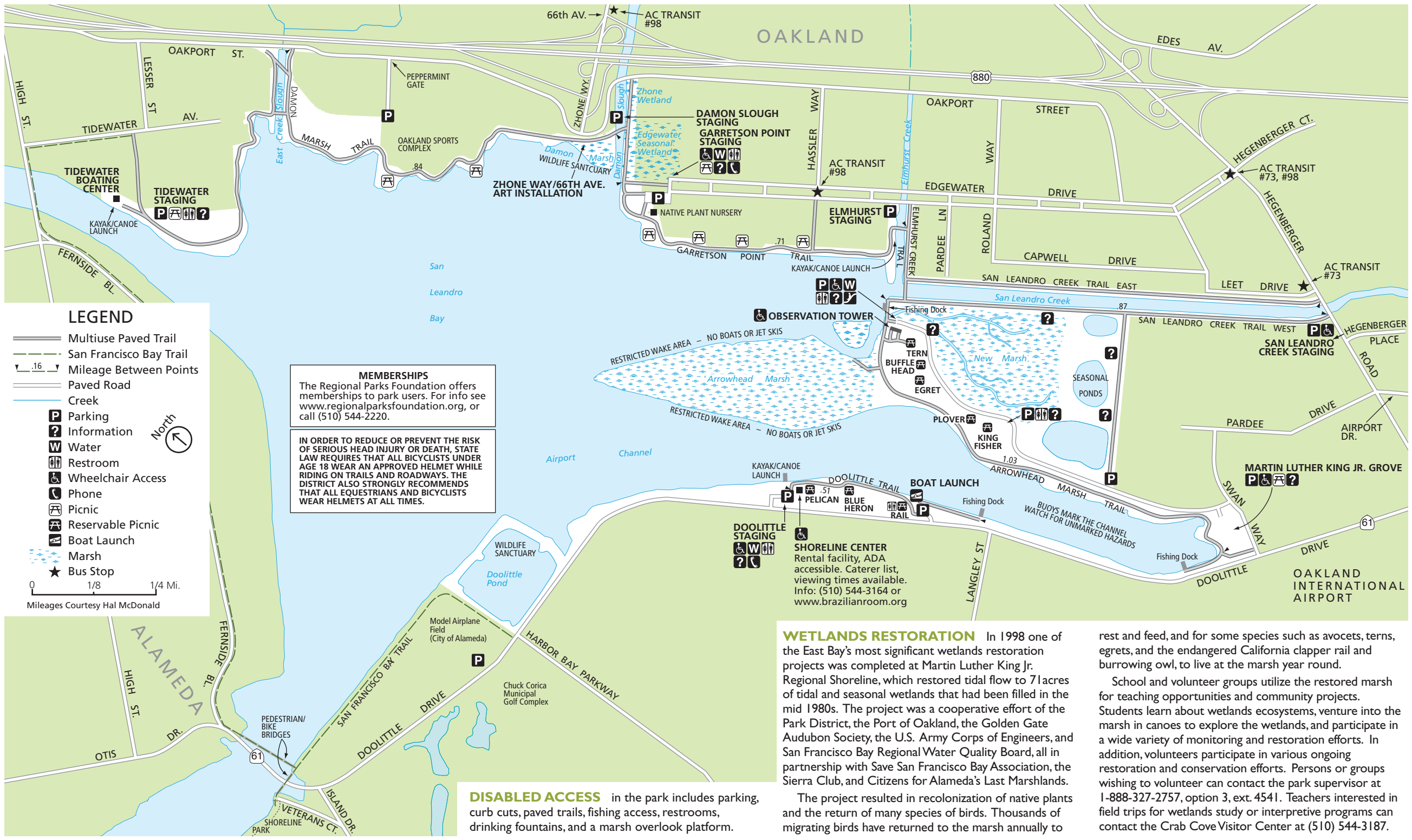
### East Bay Regional Park District

2950 Peralta Oaks Court,  
P.O. Box 5381  
Oakland, CA 94605-0381  
1-888-EBPARKS [www.ebparks.org](http://www.ebparks.org)  
Rev. 02/11

# Martin Luther King, Jr. Regional Shoreline

East Bay Regional Park District





**MEMBERSHIPS**  
 The Regional Parks Foundation offers memberships to park users. For info see [www.regionalparksfoundation.org](http://www.regionalparksfoundation.org), or call (510) 544-2220.

**IN ORDER TO REDUCE OR PREVENT THE RISK OF SERIOUS HEAD INJURY OR DEATH, STATE LAW REQUIRES THAT ALL BICYCLISTS UNDER AGE 18 WEAR AN APPROVED HELMET WHILE RIDING ON TRAILS AND ROADWAYS. THE DISTRICT ALSO STRONGLY RECOMMENDS THAT ALL EQUESTRIANS AND BICYCLISTS WEAR HELMETS AT ALL TIMES.**

**DISABLED ACCESS** in the park includes parking, curb cuts, paved trails, fishing access, restrooms, drinking fountains, and a marsh overlook platform.

**WETLANDS RESTORATION** In 1998 one of the East Bay's most significant wetlands restoration projects was completed at Martin Luther King Jr. Regional Shoreline, which restored tidal flow to 71 acres of tidal and seasonal wetlands that had been filled in the mid 1980s. The project was a cooperative effort of the Park District, the Port of Oakland, the Golden Gate Audubon Society, the U.S. Army Corps of Engineers, and San Francisco Bay Regional Water Quality Board, all in partnership with Save San Francisco Bay Association, the Sierra Club, and Citizens for Alameda's Last Marshlands.

The project resulted in recolonization of native plants and the return of many species of birds. Thousands of migrating birds have returned to the marsh annually to

rest and feed, and for some species such as avocets, terns, egrets, and the endangered California clapper rail and burrowing owl, to live at the marsh year round.

School and volunteer groups utilize the restored marsh for teaching opportunities and community projects. Students learn about wetlands ecosystems, venture into the marsh in canoes to explore the wetlands, and participate in a wide variety of monitoring and restoration efforts. In addition, volunteers participate in various ongoing restoration and conservation efforts. Persons or groups wishing to volunteer can contact the park supervisor at 1-888-327-2757, option 3, ext. 4541. Teachers interested in field trips for wetlands study or interpretive programs can contact the Crab Cove Visitor Center at (510) 544-3187.



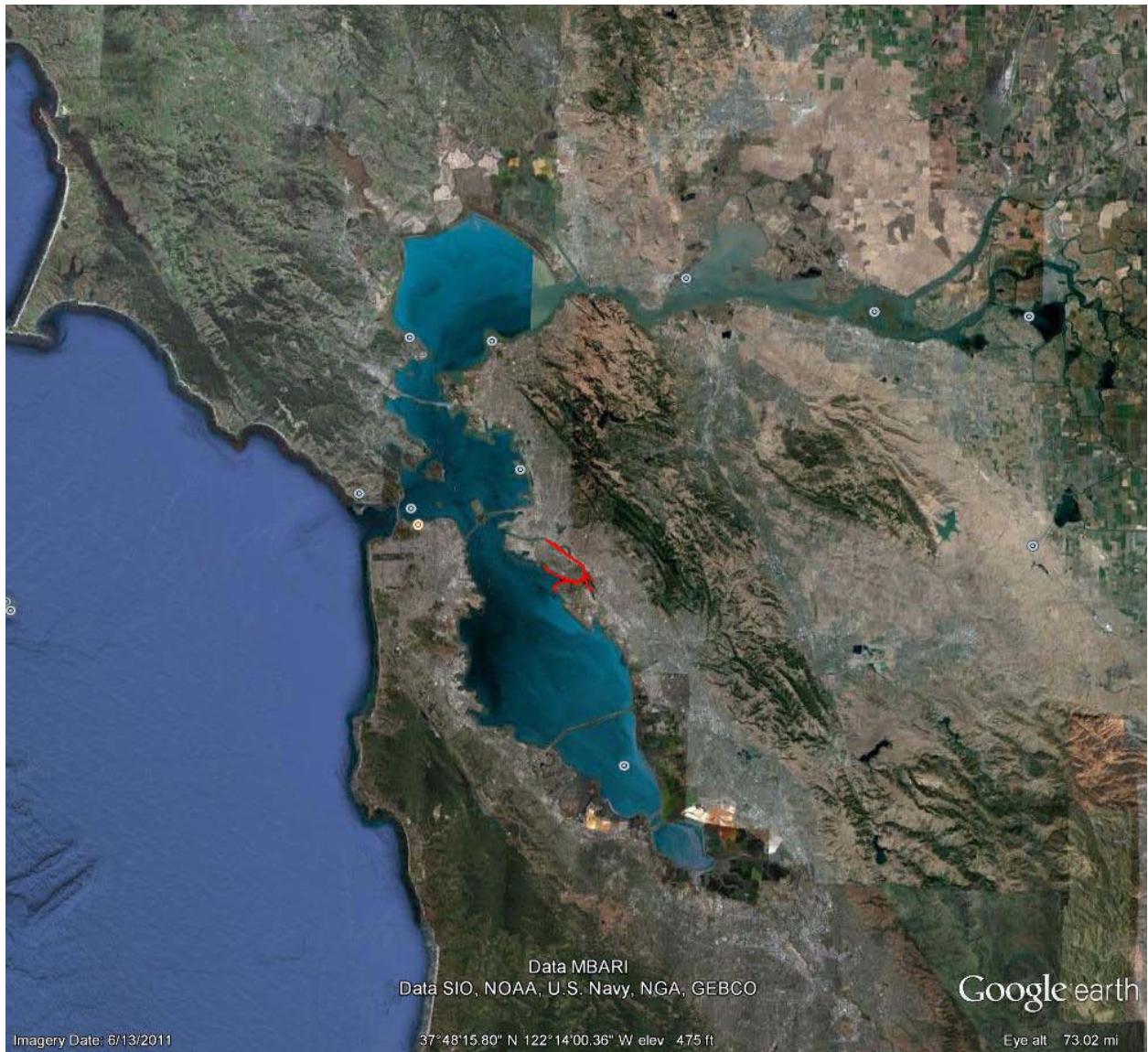
## Tidewater Boating Center in Relation to Other Potential Water Trail Sites or Local Features



### Distances From Tidewater Boating Center To:

- Harbor Bay Island Ferry: 3.48 miles
- Elsie Roemer Bird Sanctuary: 2.25 miles
- Doolittle Drive: 1.63 miles
- California Canoe and Kayak: 3.78 miles
- Jack London Aquatic Center (JLAC): 3.12 miles
- Grand Avenue Boat Ramp: 2 miles
- Elmhurst Creek: 1.1 miles
- Robert Crown Memorial State Beach: 3.98 miles





Location of Tidewater Boating Center and Measured Boating Distances in Relation to San Francisco Bay, California