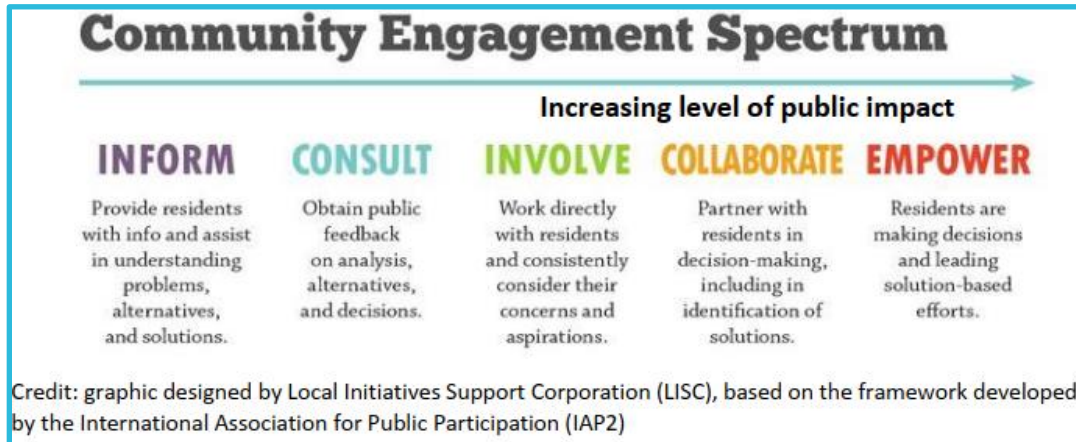


7) What else will help make my project a great success?

Our [Tips for Meaningful Community Engagement](#) handout provides important considerations and strategy ideas for designing and cultivating robust, inclusive community engagement as part of your project efforts.



Our [Guidance for Wetland Monitoring](#) details specific requirements for wetland and riparian restoration projects. This includes how to contract and conduct California Rapid Assessment Method (CRAM) wetland assessments that may be required under your grant agreement.

California Rapid Assessment Method

Wet meadow, South Lake Tahoe, CA

CRAM is a cost-effective and scientifically defensible rapid assessment method for monitoring the conditions of wetlands throughout California. It is designed for assessing ambient conditions within watersheds, regions, and throughout the State. It can also be used to assess the performance of compensatory mitigation projects and restoration projects.