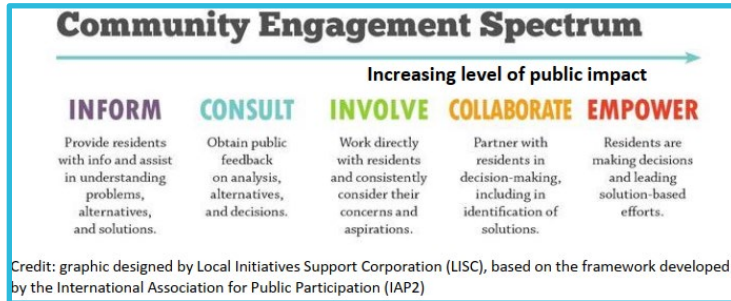


7) What else will help make my project a success?

Our [Tips for Meaningful Community Engagement](#) handout provides important considerations and strategy ideas for designing and cultivating robust, inclusive community engagement as part of your project efforts.



Interpretive signage at project sites can be an opportunity to tell new stories about the California coast and reinforce the message that all visitors and their safe uses of outdoor spaces are welcome. We encourage grantees to explore ways to tell inclusive narratives about their project and history of their site. Working with communities to develop these messages is typically an allowable grant expense. Please review our [Tips for Creating Inclusive Interpretive Materials](#) and talk to your Grant Manager about incorporating this approach into your project.

Our [Tips for Equitable Workforce Development](#) in Environmental Conservation Projects outlines a variety of workforce development practices that will help organizations advance equity goals and benefit local and systematically excluded communities. Including workforce development in your project increases the project benefit making it more competitive for funding and helping us to maximize the benefits of public money. Several of the suggested workforce development practices can be included in your Coastal Conservancy grant's project budget. Please see [this document](#) to learn more about Prevailing Wage laws.

Our [Guidance for Wetland Monitoring](#) details specific requirements for wetland and riparian restoration projects. This includes how to contract and conduct California Rapid Assessment Method (CRAM) wetland assessments that may be required under your grant agreement.

