

Legend:

- Santa Ana River Trail (dashed red line)
- Santa Ana River Watershed (light brown area)
- Santa Ana River (blue line)
- City of Riverside (black outline)

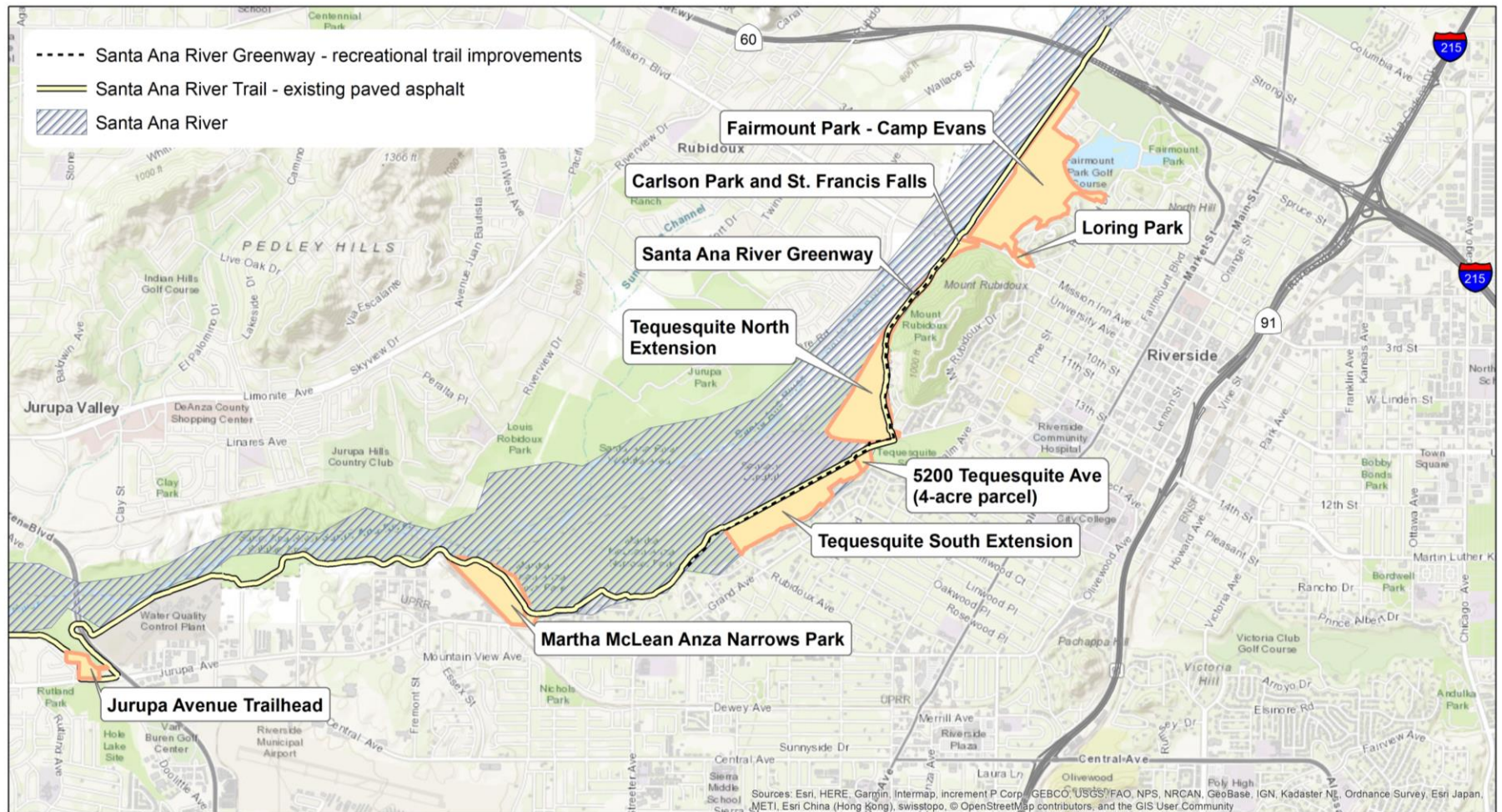
River-side Gateway Project Suite

Sources: Esri, HERE, Garmin, Intermap, increment P Corp., GEBCO, USGS, FAO, NPS, NRCAN, GeoBase, IGN, Kadaster NL, Ordnance Survey, Esri Japan, METI, Esri China (Hong Kong), swisstopo, © OpenStreetMap contributors, and the GIS User Community



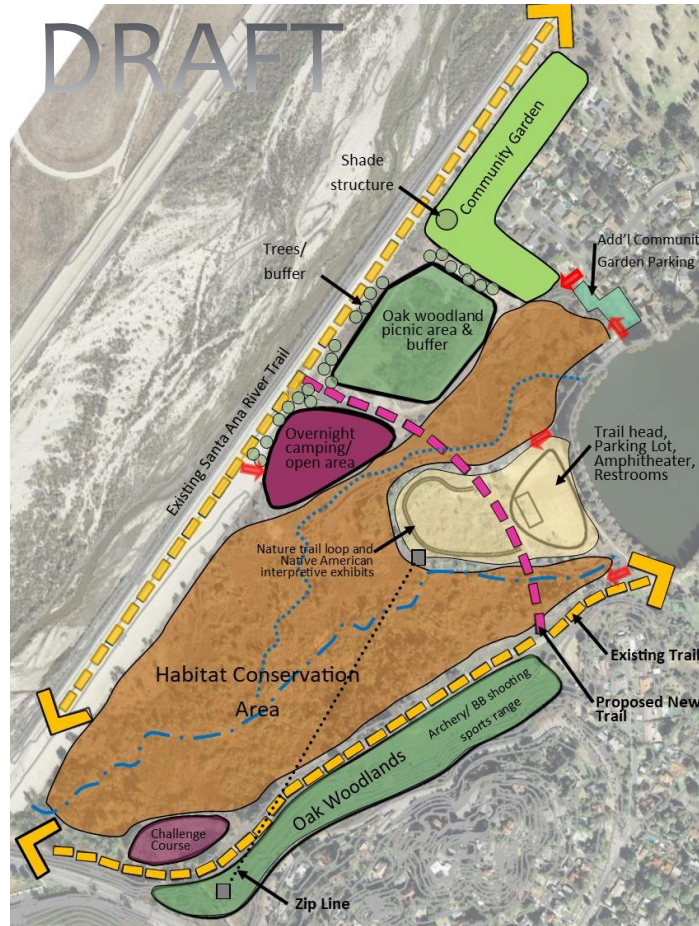
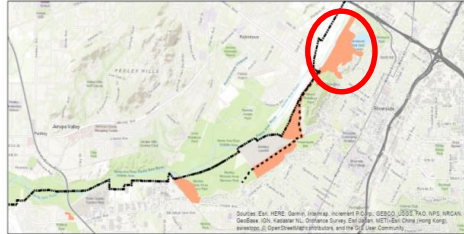
CITY OF RIVERSIDE SANTA ANA RIVER PARKWAY IMPROVEMENT PROJECTS

SITE LOCATIONS



DRAFT IMPROVEMENT IDEAS

FAIRMOUNT PARK - CAMP EVANS MASTER PLAN



1. Habitat conservation area
2. Oak woodlands
3. Trailhead parking lot
4. Small amphitheater
5. Restrooms
6. Nature/cultural interpretive trail
7. Challenge course
8. Zip line
9. Camping area
10. Picnic area
11. Community garden
12. Archery/BB shooting sports range
13. Improved Fire Dept access

DRAFT IMPROVEMENT IDEAS

LORING PARK - MASTER PLAN



1. Walking trails
2. Stairs – connect to Camp Evans and SART
3. Vista point
4. Landscape and irrigation
5. Parkour/exercise stations
6. Public art



DRAFT IMPROVEMENT IDEAS

CARLSON PARK - STRUCTURAL ANALYSIS AND FEASIBILITY STUDY FOR RENOVATION OF ST. FRANCIS FALLS AND INSTALLATION OF HISTORIC ENTRY SIGN



1. Renovate the welcome gateway/entry into Riverside
2. Have a public art competition to receive proposals to renovate historic water feature to use lights or other artistic method to simulate running water rather than re-establishing water in the falls.
3. Re-install the historic neon sign on the hillside above Carlson Park and Mission Inn Ave



DRAFT IMPROVEMENT IDEAS

SANTA ANA RIVER GREENWAY – RECREATIONAL TRAIL IMPROVEMENTS



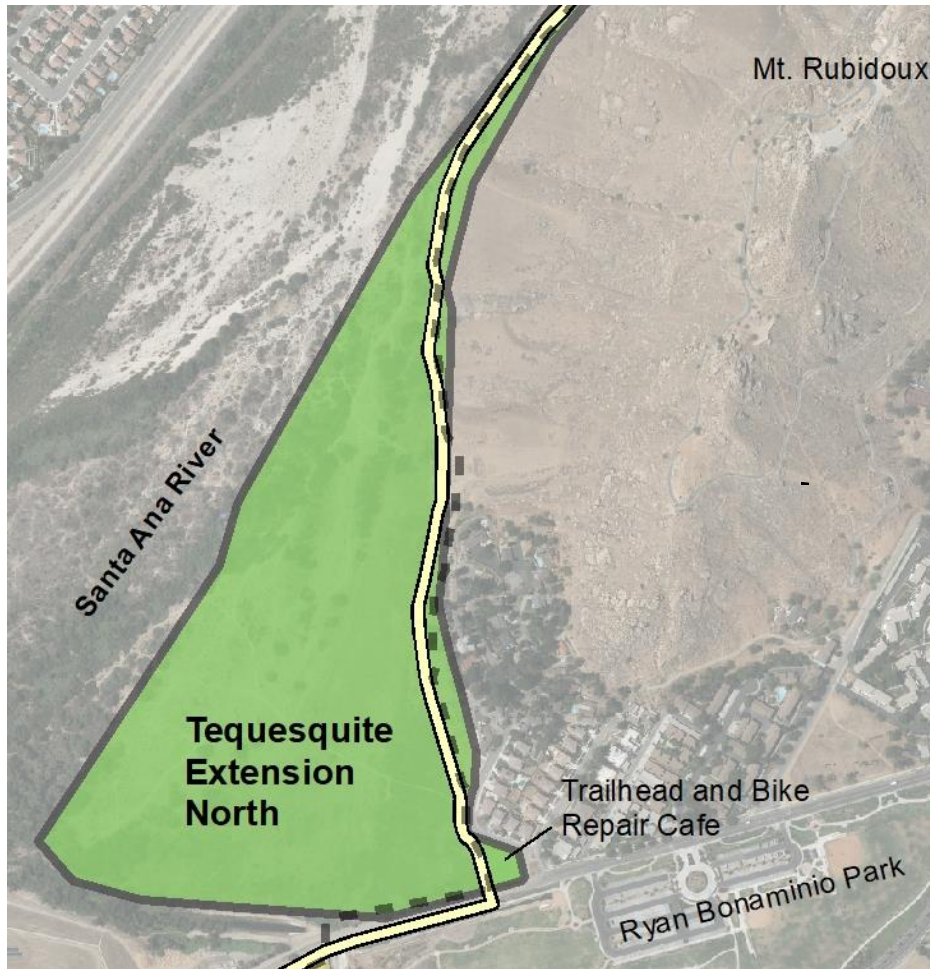
1. Add decomposed granite trail parallel to existing paved asphalt trail to separate slower pedestrian traffic
2. Trees, landscaping, irrigation
3. Lighting
4. Signage
5. Emergency phones
6. Drinking fountains
7. Seating/rest areas



■ ■ ■ Santa Ana River Greenway Recreational Trail Improvements
— Santa Ana River Trail

DRAFT IMPROVEMENT IDEAS

TEQUESQUITE NORTH EXTENSION – MASTER PLAN AND TRAILHEAD IMPROVEMENTS



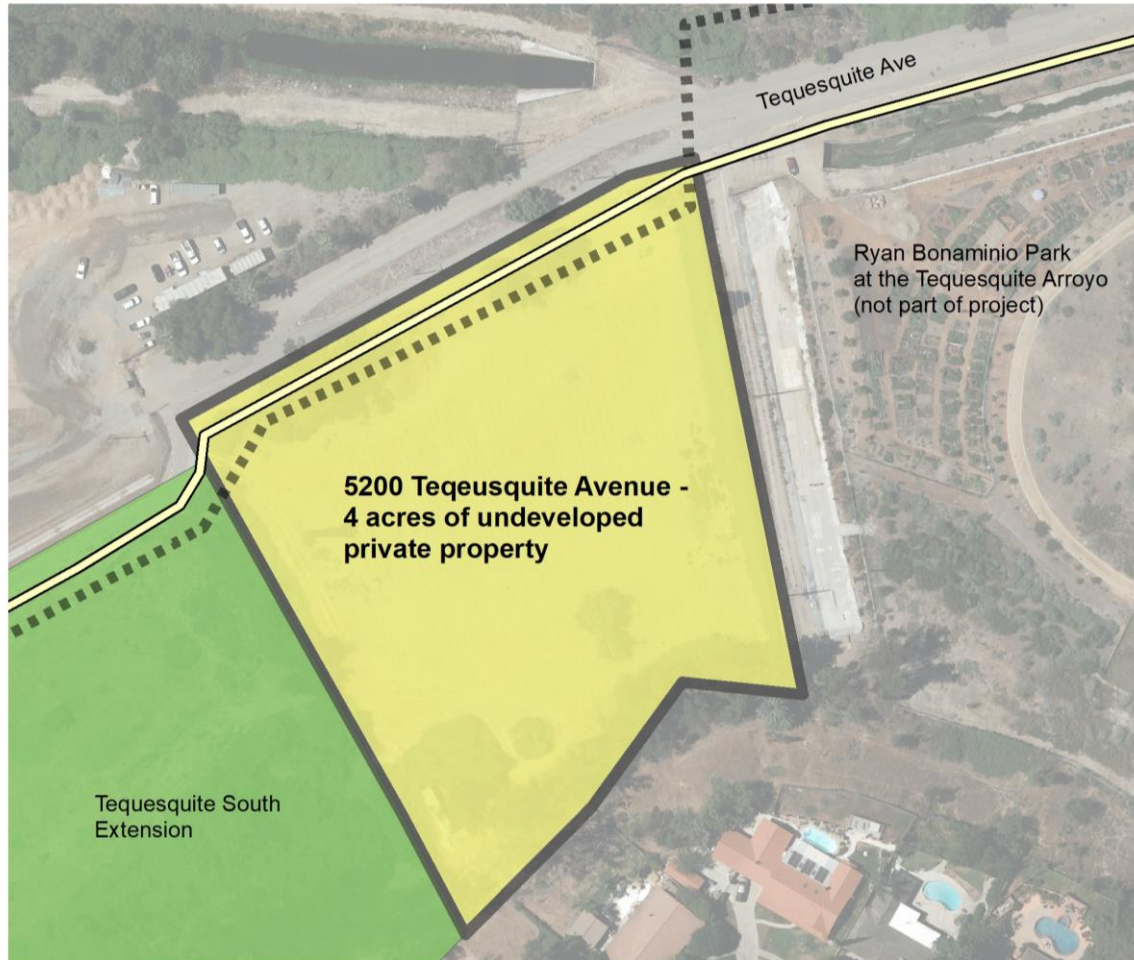
1. Habitat
2. Native plant interpretive garden
3. SART trailhead with signage, rest area, drinking fountain
4. Bike repair café
5. Educational/interpretive trails
6. Lighting
7. Vehicle access control to block unauthorized access to river bottom



- Santa Ana River Trail
- ■ ■ Santa Ana River Greenway

DRAFT IMPROVEMENT IDEAS

5200 TEQUESQUITE AVENUE – ACQUISITION AND MASTER PLAN FOR 4-ACRES OF PRIVATE PROPERTY



1. Acquisition
2. Dog park
3. Skate park
4. Community garden expansion, agriculture



- Santa Ana River Trail
- ■ ■ Santa Ana River Greenway

DRAFT IMPROVEMENT IDEAS

TEQUESQUITE SOUTH EXTENSION – MASTER PLAN



1. Habitat
2. Agriculture, small farm incubator
3. Educational/interpretive trails
4. Oak woodlands
5. Nature playground
6. Dog park – depending on community input
7. Horse stables with rentals and classes
8. Skate park



- Santa Ana River Trail
- ■ ■ Santa Ana River Greenway

DRAFT IMPROVEMENT IDEAS

MARTHA MCLEAN ANZA NARROWS PARK – RIVERSIDE GATEWAY MASTER PLAN



1. River Gateway improvements
2. Circulation & vehicular control throughout park
3. Remove and relocate existing restroom
4. Santa Ana River Trail monument sign on Jurupa Ave
5. Landscape and irrigation refurbishment throughout park, California native plants
6. Recreational decomposed granite trail along park edge adjacent to existing paved Santa Ana River Trail



- Santa Ana River Trail
- ■ ■ Santa Ana River Greenway

DRAFT IMPROVEMENT IDEAS

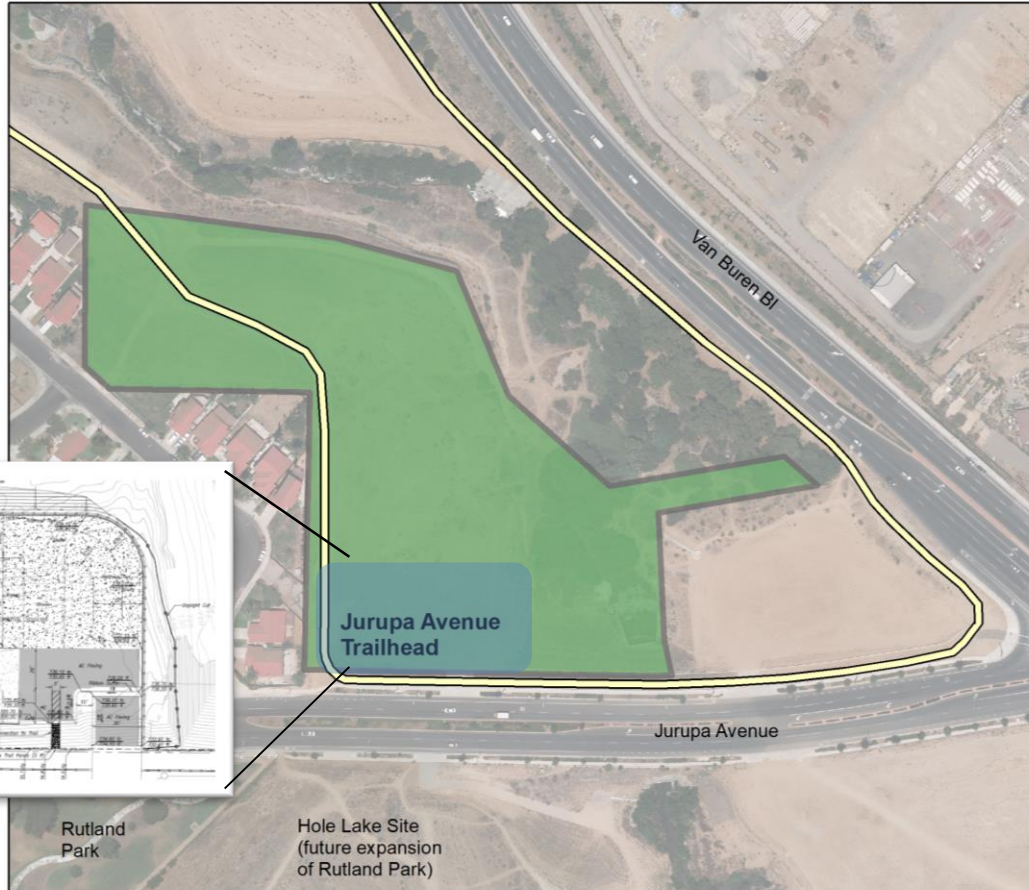
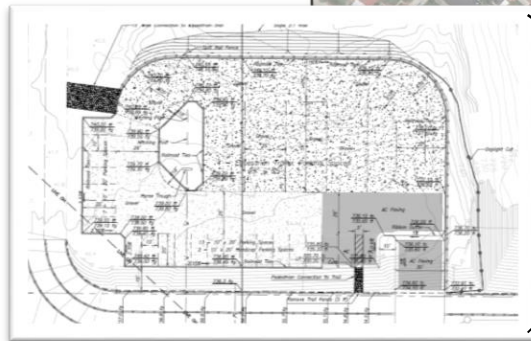
MARTHA MCLEAN ANZA NARROWS PARK – RIVER GATEWAY AREA PRELIMINARY CONCEPT



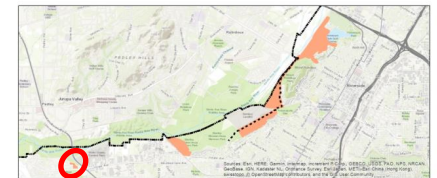
DRAFT IMPROVEMENT IDEAS

JURUPA AVENUE TRAILHEAD

Trailhead Plan



1. Drinking water
2. Shady resting areas
3. Parking for cars and trailers
4. Equestrian facilities (water, hitching, etc.)
5. Bike lockers/racks (to encourage active transportation)
6. Bicycle repair station



— Santa Ana River Trail

SITE PHOTOS

FAIRMOUNT PARK – CAMP EVANS



Riparian woodlands



Existing Santa Ana River Trail connector through Camp Evans area, with a view of Mt. Rubidoux in the background.

SITE PHOTOS

FAIRMOUNT PARK – CAMP EVANS



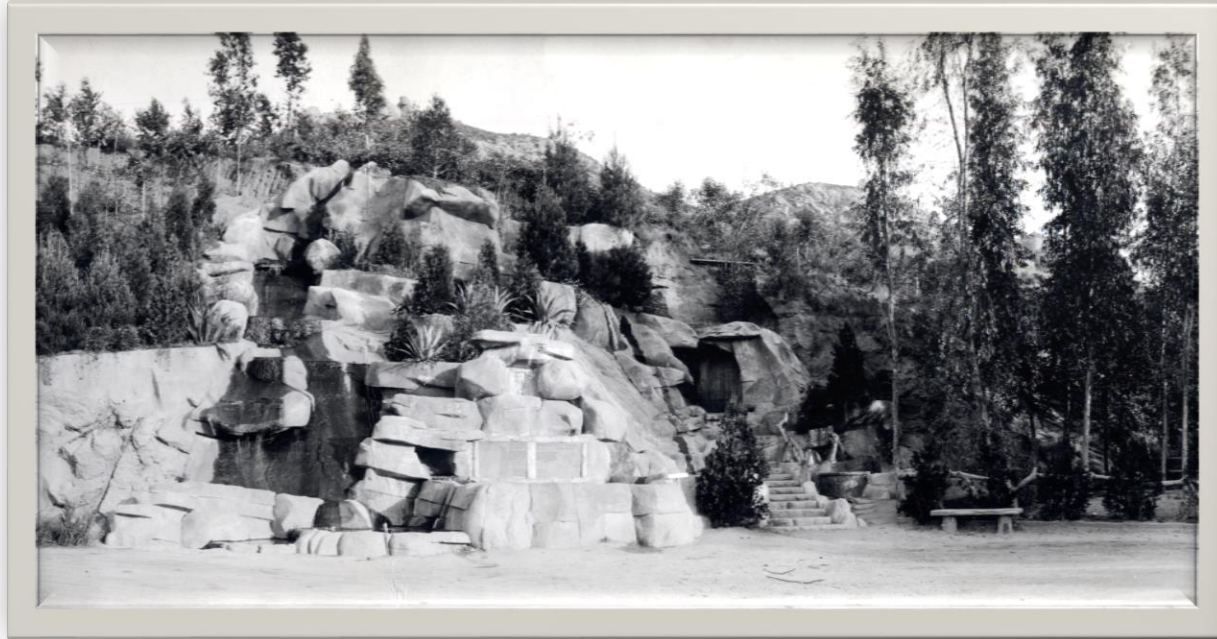
SITE PHOTOS

LORING PARK

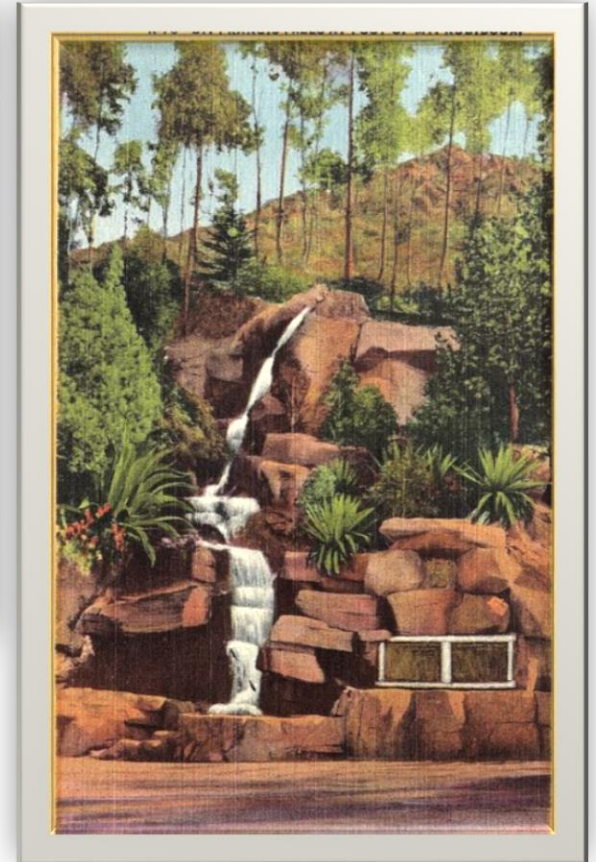


SITE PHOTOS

CARLSON PARK – ST. FRANCIS FALLS



St. Francis Falls, circa 1930 - 1950



SITE PHOTOS

CARLSON PARK – ST. FRANCIS FALLS



St. Francis Falls, 2019. Erosion from the hillside above has undermined the Falls creating large holes and exposed rebar in the plaster. The Falls need to be re-plastered to stabilize it from further erosion and to provide a stable base for further rehabilitation of the historic landmark.

SITE PHOTOS

SANTA ANA RIVER GREENWAY AND TRAIL



The existing Santa Ana River Trail through riverside is a Class I paved route as depicted in the two photos. The greenway project will add a parallel decomposed granite trail to allow for the separation of uses between higher speed modes such as bicycles, and lower speed modes such as walking. The greenway project will also add low water use landscaping, trees, and lighting, to create a more user friendly trail experience.



SITE PHOTOS

TEQUESQUITE NORTH EXTENSION



Location for bike repair café.

SITE PHOTOS

5200 TEQUESQUITE



SITE PHOTOS

TEQUESQUITE EXTENSION SOUTH



SITE PHOTOS

MARTHA MCLEAN ANZA NARROWS PARK

The park is adjacent to the Santa Ana River and may be the most feasible location in Riverside for public river access



The park is adjacent to the Santa Ana River Trail

SITE PHOTOS

MARTHA MCLEAN ANZA NARROWS PARK



This photo shows where a playground had to be removed due to disrepair when the City took ownership of the park in 2011. The playground has not yet been replaced due to a lack of funding.

There is an existing restroom that should be relocated to a more visible location for safety. The restroom is also outdated and difficult to maintain to meet current standards and expectations.



SITE PHOTOS

JURUPA AVENUE TRAILHEAD



The trailhead location is immediately adjacent to the Santa Ana River Trail and is in a prominent location at a major intersection.