

Exhibit 1: Project Location and Maps

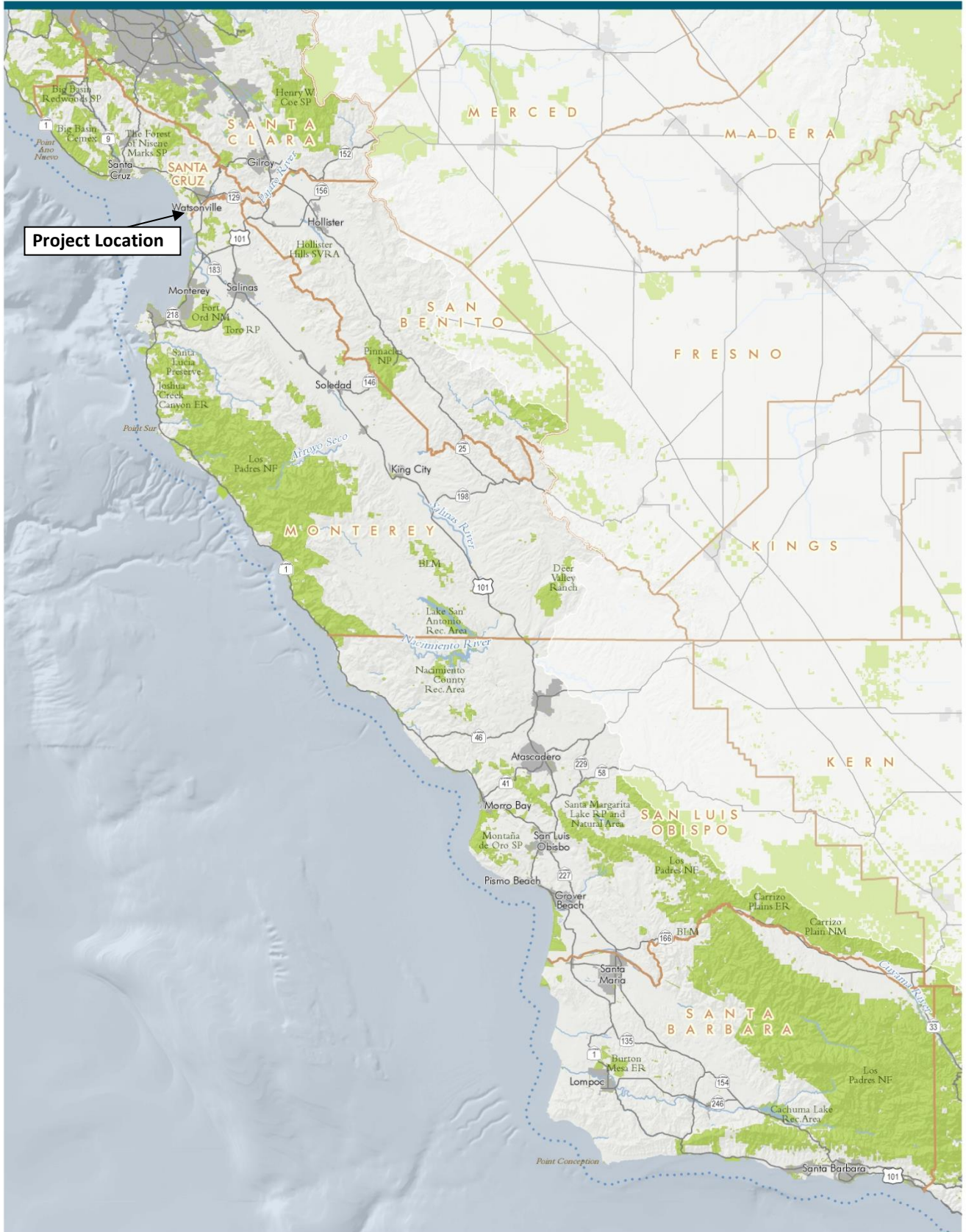


Exhibit 1: Project Location and Maps




Esri, NASA, NOAA, USGS, County of Santa Cruz, California State Parks, Esri, HERE, Garmin, SwireGraph, HERE/USA, USGS, Bureau of Land Management, EPA, NPS, USDA, Sentinel Hub Company, Santa Cruz County, Maxar

Beach Ranch

 Beach Ranch Parcels (264-Acres)



0 500 1,000 Feet




LAND TRUST
SANTA CRUZ COUNTY

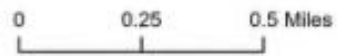
Exhibit 1: Project Location and Maps



Pajaro River Mouth:
Potential Sea Level Rise Impacts

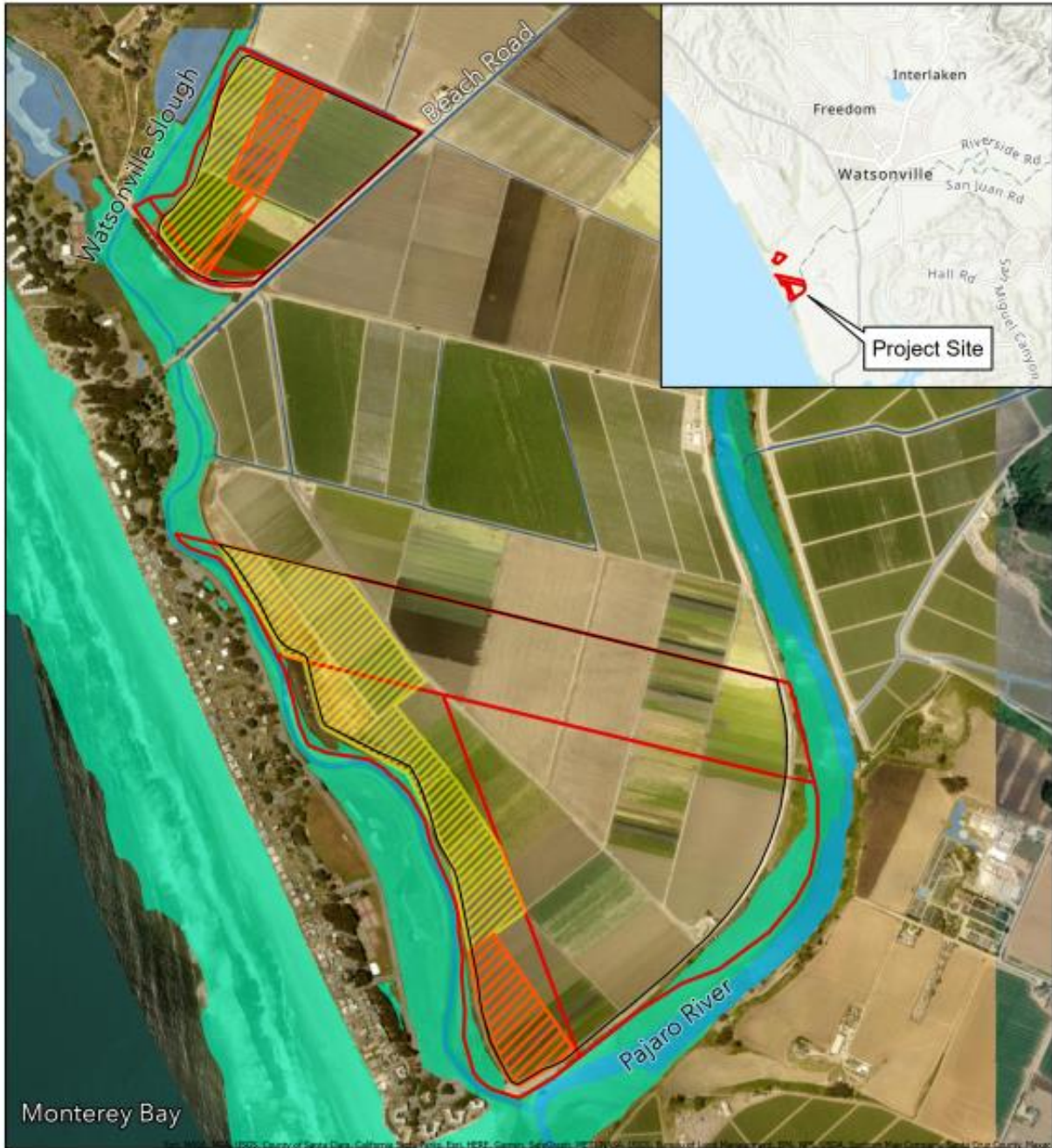
Flood Extent - 50cm (1.6 ft) of Sea Level Rise

- | | |
|--|---|
|  1-year-storm |  Low-lying Flood Prone Area 1-year-storm |
|  20-year-storm |  Low-lying Flood Prone Area 20-year-storm |
|  100-year-storm |  Low-lying Flood Prone Area 100-year-storm |







LAND TRUST
SANTA CRUZ COUNTY

Exhibit 1: Project Location and Maps



Beach Ranch - Restoration Areas

-  Phase 1 Restoration (~48-Acres)
-  Phase 2 Restoration (~17-Acres)

-  Beach Ranch Survey Parcels (247.28 Acres)
-  Farm Operation Area (~220 Acres - 211 Acres leased)

Wetland Types

- | | |
|--|---|
|  Riverine |  Freshwater Emergent Wetland |
|  Estuarine and Marine Deepwater |  Freshwater Forested/Shrub Wetland |
|  Estuarine and Marine Wetland |  Freshwater Pond |

